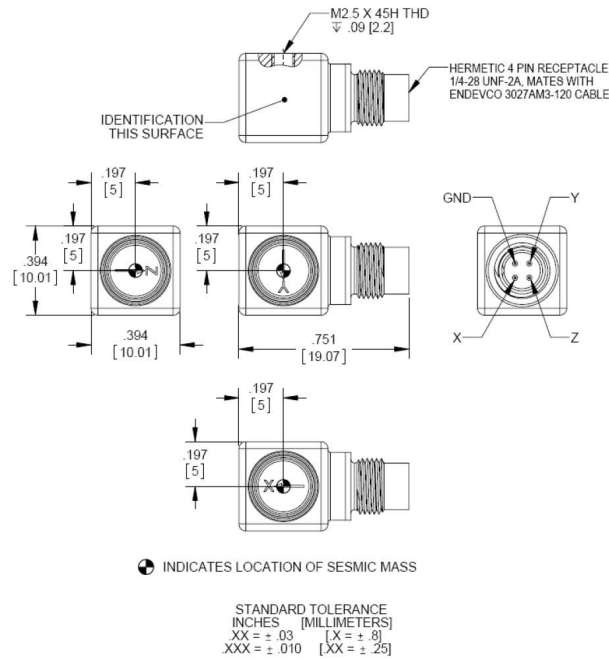


Endevco®

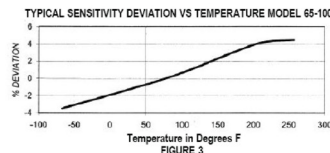
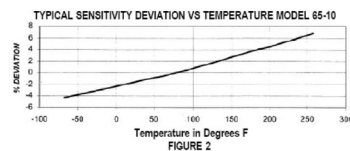
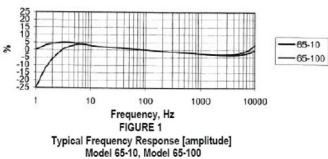
Isotron® accelerometer Model 65



The high sensitivity and high performance of model 65 distinguishes this triaxial accelerometer from comparable products. Model 65 is packaged in a 10-mm cube of welded titanium construction. Interface to the model 65 is via a Microtech 4-pin connector. Temporary petro-wax adhesive and a ten-foot cable assembly with BNC connectors are provided as standard accessories.

Model 65 has excellent frequency response, both amplitude and phase, provide the user with a triaxial accelerometer ideally suited for structural and component testing, drop tests and general laboratory vibration work. The reduced size of this accelerometer enables the test engineer or technician to measure the accelerations of three orthogonal axes of vibration simultaneously on lightweight structures. Optional mounting block accessories are available for model 65.

Signal conditioner models 133, 2793, 4416B or Oasis 2000 are recommended for use with this accelerometer.



Key features

- 65-10-R and 65-100-R available as replacement sensors
- Triaxial, low-impedance output
- Small size (10-mm cube, 5 gram)
- Ideal for structural analysis, laboratory testing, and modal analysis
- Single connector, flexible cable

Meggitt Sensing Systems

Our measurement product competencies:

Piezoelectric accelerometers | Piezoresistive accelerometers | Isotron accelerometers | Variable capacitance accelerometers | Pressure transducers | Acoustic sensors | Electronic instruments | Calibration systems | Shakers | Modal hammers | Cable assemblies

MEGGITT
smart engineering for
extreme environments

Endevco®

Isotron® accelerometer

Model 65

Specifications

The following performance specifications conform to ISA-RP-37.2 (1964) and are typical values, referenced at +75°F (+24°C) and 100 Hz, unless otherwise noted. Calibration data, traceable to National Institute of Standards and Technology (NIST), is supplied.

Dynamic characteristics	Units	-10	-100
Range	g (m/s ²)	±500 (4900)	±50 (490)
Voltage sensitivity	mV/g (mV / m/s ²)	10 (1.02)	100 (10.2)
Amplitude response			
±1 dB	Hz	0.4 to 10 000	1.5 to 6000
±3 dB	Hz	0.2 to 10 000	0.7 to 10 000
Phase response, ±5°	Hz	3 to 1500	10 to 1500
Resonance frequency	Hz	60 000	45 000
Transverse sensitivity	%	< 5	< 5
Temperature response			
Sensitivity deviation, ±5%		+30°F to +104°F (0°C to +40°C)	
Sensitivity deviation, ±10%		-4°F to +185°F (-20°C to +85°C)	
Amplitude non-linearity	%	< 1	< 1

Output characteristics

Output polarity		See arrows on outline drawing	
DC output bias voltage [1]	Vdc	+12.3 to +13.5	
Output impedance			
2 mA to 3 mA	Ω	< 300	< 300
3 mA to 20 mA	Ω	< 100	< 100
Full scale output voltage	Vpk	±5	±5
Noise floor			
Broadband (2Hz to 10kHz)	μg rms	800	400
Spectral			
1Hz	μg/√Hz	500	300
10Hz	μg/√Hz	80	50
100Hz	μg/√Hz	15	10
1kHz	μg/√Hz	6	4

Grounding [2] Signal ground connected to case

Power requirement

Compliance voltage	Vdc	+23 to +30	
Supply current	mA	+2 to +20	
Warm-up time (to reach 90% of final bias)	sec	< 20	< 20

Environmental characteristics

Temperature range		-67°F to 257°F (-55°C to +125°C)	
Humidity		Welded construction	
Sinusoidal vibration limit	g pk	±500	±200
Shock limit [3]	g pk	10 000	10 000
Base strain sensitivity at 250 μstrain	eq. g/μstrain	< 0.001	< 0.001
Thermal transient sensitivity	eq. g/°F	0.02	0.02

Physical characteristics

Dimensions		See outline drawing	
Weight	oz (gm)	0.17 (5)	0.17 (5)
Case material		Titanium, commercially pure	
Connector [4]		4 pin Microtech style side mounted	
Mounting [5]		Adhesive or m2.5 thread	
Mounting torque	lbf-in	8	8

Calibration

Supplied, each axis:			
Voltage sensitivity	mV/g		
Maximum transverse sensitivity	%		
Frequency response	%	20 to 6000	

Endevco®

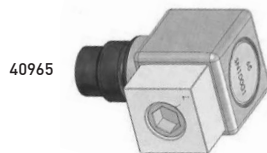
Isotron® accelerometer Model 65

Accessories

Product	Description	65	65-R
3027AM3-120	Triaxial cable 85°C, 3 BNC's at instrumentation end	Included	Optional
EH755	Screw cap M2.5 x .45 x 6 mm	Included	Included
EH761	Screw set M2.5 x .45 x 6 mm	Included	Included
32279	Mounting wax	Included	Optional
3027A-120	Cable assembly, silicone jacket, 125°C [6]	Optional	Optional
3027AVM13-120	Triaxial cable, 200°C (transducer extension cable mates with model 3027AM3) [7]	Optional	Optional
40965	Mounting block, adhesive mount	Optional	Optional
EH769	Screw for 40965 mounting block	Optional	Optional
41013	Mounting clip	Optional	Optional
2981-14	Mounting stud, M2.5 to 6-32	Optional	Optional
133	Signal conditioner	Optional	Optional
2793	Isotron signal conditioner	Optional	Optional
4416B	Battery powered Isotron conditioner	Optional	Optional
4990A-1	OASIS 2000 computer controlled system	Optional	Optional
65M1	Electrical isolation, case [2]	Optional	Optional

Notes

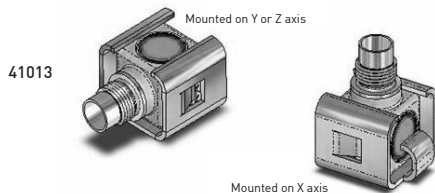
- +22 Vdc minimum must be available to the accelerometer to ensure full-scale operation at the temperature extremes.
- Case isolation available as model 65M1-10 (10 mV/g unit) and 65M1-100 (100 mV/g unit). For these models, signal ground is connected to the case and isolated from the mounting surface.
- Shock pulses of short duration may excite transducer resonance.
- Microtech DR-4S-4 receptacle mates with Endevco model 3027AM3 cables.
- Be careful not to apply abusive forces when removing the accelerometer from a structure.
- The 3027A cable assembly should be used in applications where the accelerometer is used near its upper temperature range extreme, 257°F (125°C). The included cable assembly, 3027AM3-120, is only rated for use up to only 185°F (85°C).
- The 3027AVM13-XXX cable assembly should be used as a 257°F (125°C) extension cable for model 3027AM3-120. Cable length, in inches, is specified by the model number suffix.
- Maintain high levels of precision and accuracy using Meggitt's factory calibration services. Call Meggitt's inside sales force at 800-982-6732 for recommended intervals, pricing and turn-around time for these services as well as for quotations on our standard products.



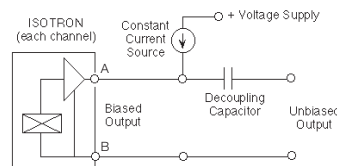
40965



Model 133
3-channel
signal conditioner



41013



Continued product improvement necessitates that Meggitt reserve the right to modify these specifications without notice. Meggitt maintains a program of constant surveillance over all products to ensure a high level of reliability. This program includes attention to reliability factors during product design, the support of stringent Quality Control requirements, and compulsory corrective action procedures. These measures, together with conservative specifications have made the name Endevco synonymous with reliability.
112916

Contact

Meggitt Sensing Systems

14600 Myford Road
Irvine
CA 92606, USA
Tel: +1 (949) 493 8181
Fax: +1 (949) 661 7231
www.endevco.com
www.meggitt.com

MEGGITT
smart engineering for
extreme environments