



Driven.

VEHICLE DYNAMICS

ENGINEERING - INNOVATION - PRECISION

Think Differently. Think Dynamically.

STRIDE™ is a low-profile and overrunable robotic platform designed for carrying Vulnerable Road User (VRU) soft targets, such as pedestrians and bicyclists, for ADS and intelligent vehicle evaluation or development.

Priced at only a fraction of the competition, **STRIDE™** is ideal for customers wishing to evaluate vehicle performance in scenarios including multiple mobile VRUs.

VEHICLE TESTING ECOSYSTEM **STRIDE™**

SMALL TEST ROBOT FOR INDIVIDUALS
IN DANGEROUS ENVIRONMENTS



SPECIFICATIONS

Dimensions	610 mm x 610 mm
Weight	25 kg - <i>can be lifted by one person</i>
Chassis Height	50 mm - 72 mm <i>at small antenna protrusion</i>
Weather Resistance	Splash water protected
Maximum Speed	20 kph
Turning Radius	0 m - <i>can turn in place</i>
GPS Accuracy	2 cm - <i>RTK Integer</i>
Target Capacity	10 kg

KEY FEATURES



Turning in place for realistic pedestrian motion



Holding on grades up to 30%



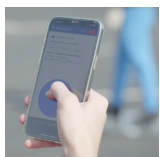
Use with a cyclist target



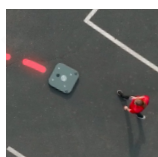
Hot-swappable batteries



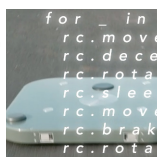
Dual antenna RTK-GPS for accurate localization



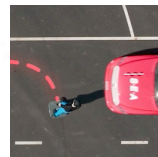
GUI software available on computers and mobile devices to control robot



Easily record and replicate paths



Easily set up custom scenarios with Python-based scripts



Integration with vehicle triggering available



Can be run over by vehicles in testing without damage

To schedule a demo
or request more
information:

**VehicleDynamics@
SEAlimited.com**



SEE THE STRIDE
IN ACTION!